



EVI Inverter Heat Pump for Low Temperature Heating and Cooling with R410A Refrigerant

Our Product Introduction

for more products please visit us on airsourc-heatpump.com

Basic Information

- Place of Origin: China
- Brand Name: meidibao
- Certification: CE
- Model Number: DKFXKR-35II-M1CD1
- Minimum Order Quantity: 6 units
- Price: negotiate a price
- Packaging Details: Factory standards
- Delivery Time: 25-30 work days
- Payment Terms: T/T
- Supply Ability: 20 units day



Product Specification

- Brand Name: MEIDIBAO
- Place Of Origin: China
- Type: Inverter
- Operation Ambient Temp: -25~43
- Refrigerant Type: R410A
- Model: DKFXKR-35II-M1CD1
- Name: EVI Heat Pump
- Highlight: **EVI Split Heat Pump,
LOW Temperature Heat Pump Heating Cooling**

EVI Split Heat Pump LOW Temperature Heat Pump Heating Cooling, Heat Pump Water Heaters

Product Overview

DKFXKR-35II-M1CD1 Inverter LOW temperature heat pump for heating and cooling applications.

Scientific research shows that from the perspective of health and comfort, the ideal temperature in winter is between 18-20°C. The ideal heat distribution shows a temperature distribution from floor to ceiling with vertical reduction, which can keep the feet warm and clear-headed. The heat of floor heating rises from the foot, so that the temperature of the whole indoor space is hierarchically distributed. It conforms to the theory that TCM health is "warm and cool". Floor heating is an ideal heating method without hot air, which is beneficial to the body to maintain moisture. At the same time, it has a promoting effect on rheumatism and asthma.

Key Features

- Timer and clock function
- Multiple protection systems
- Automatic and forced defrost
- Anti-freezing function

Technical Specifications

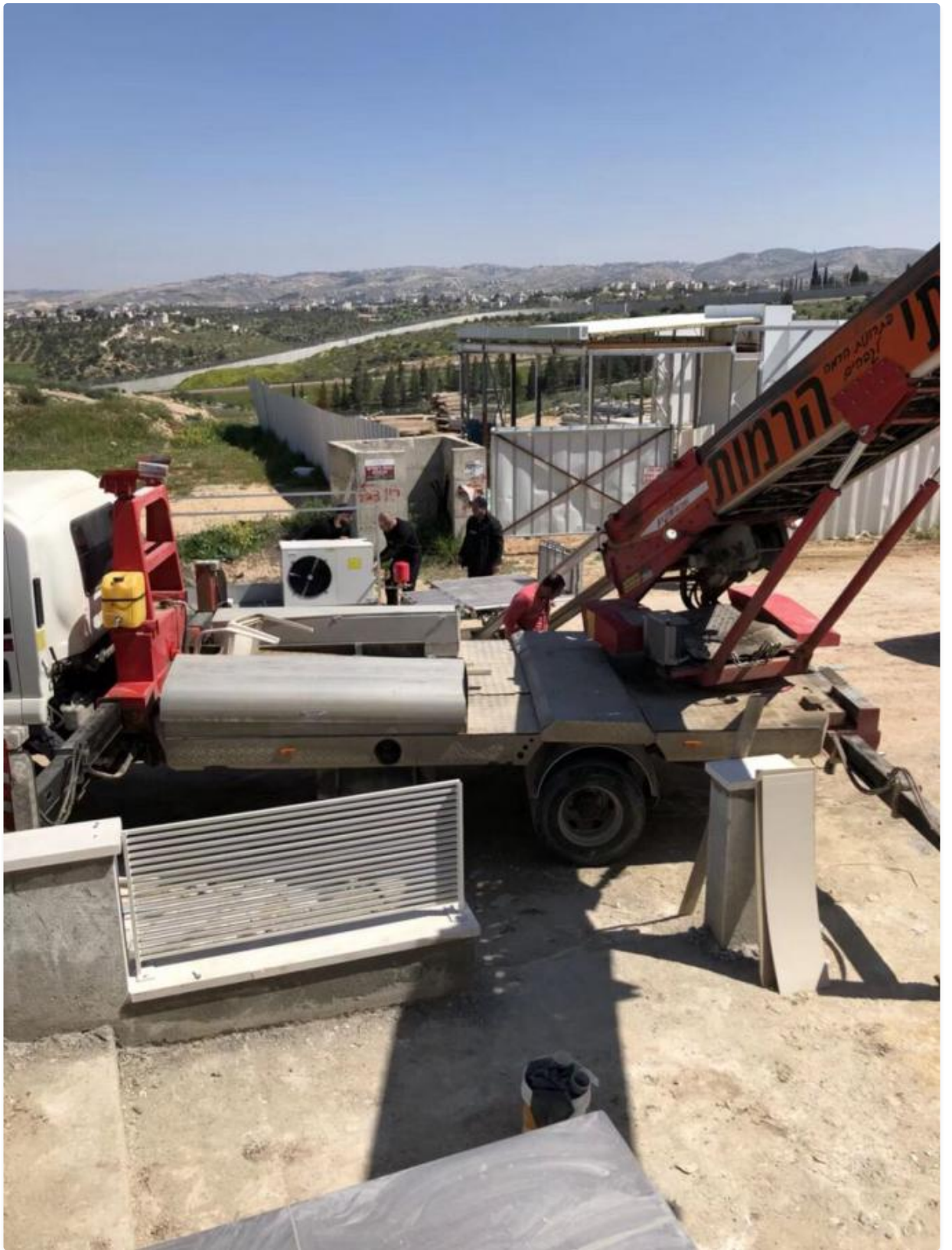
Product	Inverter EVI Heating And Cooling Heat Pump
Model	DKFXKR-35II-M1CD1
Power supply	3N 380V 50HZ
Rated heating capacity (A7 W45)	31.6kW
Rated heating power	9.23kW
Rated heating capacity (A-7 W41)	22.6KW
Rated heating power	8.31KW
Rated cooling capacity (A-12 W41)	20.3KW
Rated cooling power	8.35kW
Max Rated current	22.4A
Refrigerant / Charge	R410/3400g
Water pipe size	DN40
Noise	≤68dB(A)
Product dimension	1150×550×1575mm
Net weight	220kg

Energy Efficiency Advantages

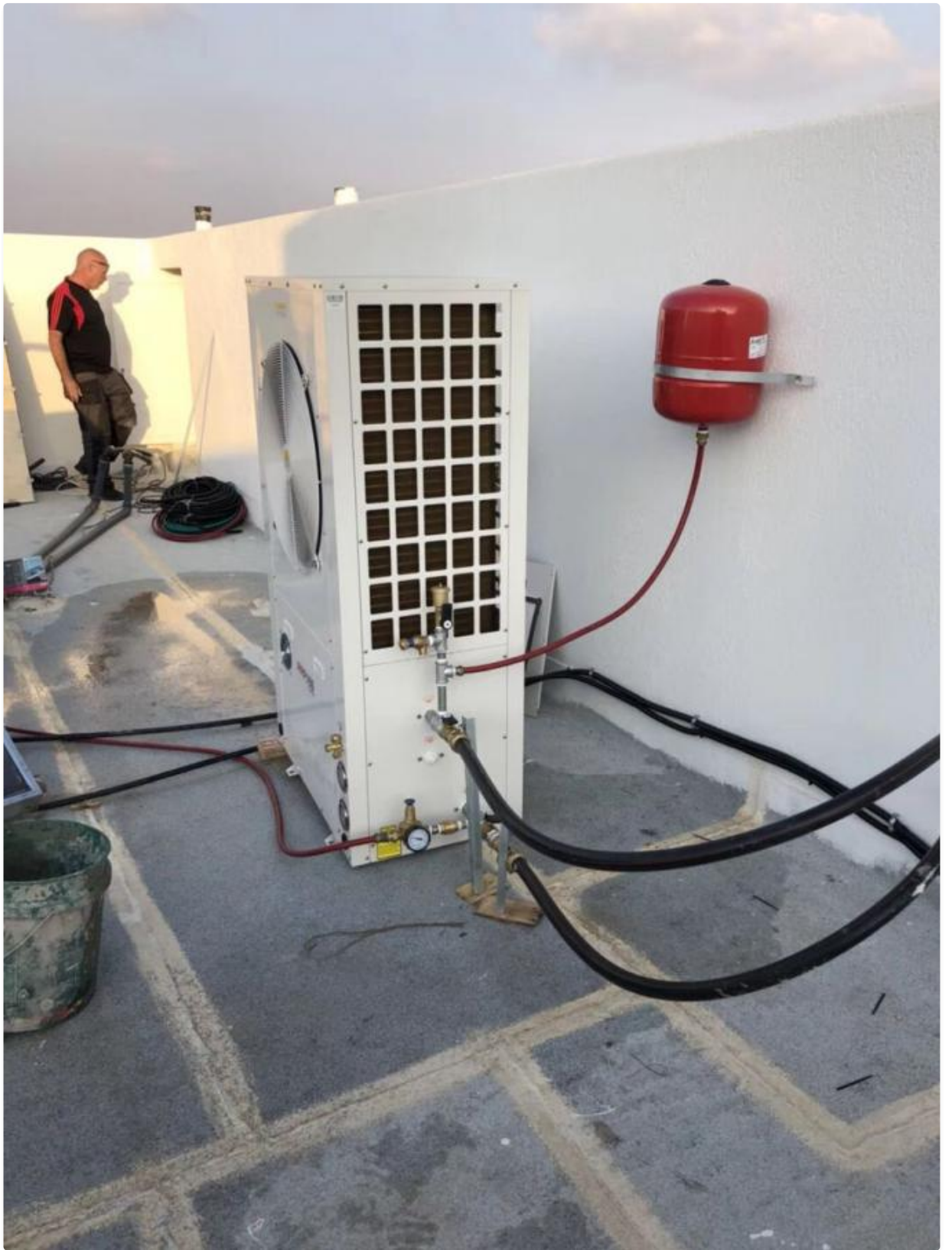
Under ideal weather conditions, heat pump water heaters produce three times the energy used to power the heat pump. In other words, heat pump water heaters use one-third of the electricity of conventional electric water heaters. CUB estimates that the average residential customer would save a lot of money per month using a MEIDIBAO heat pump water heater.

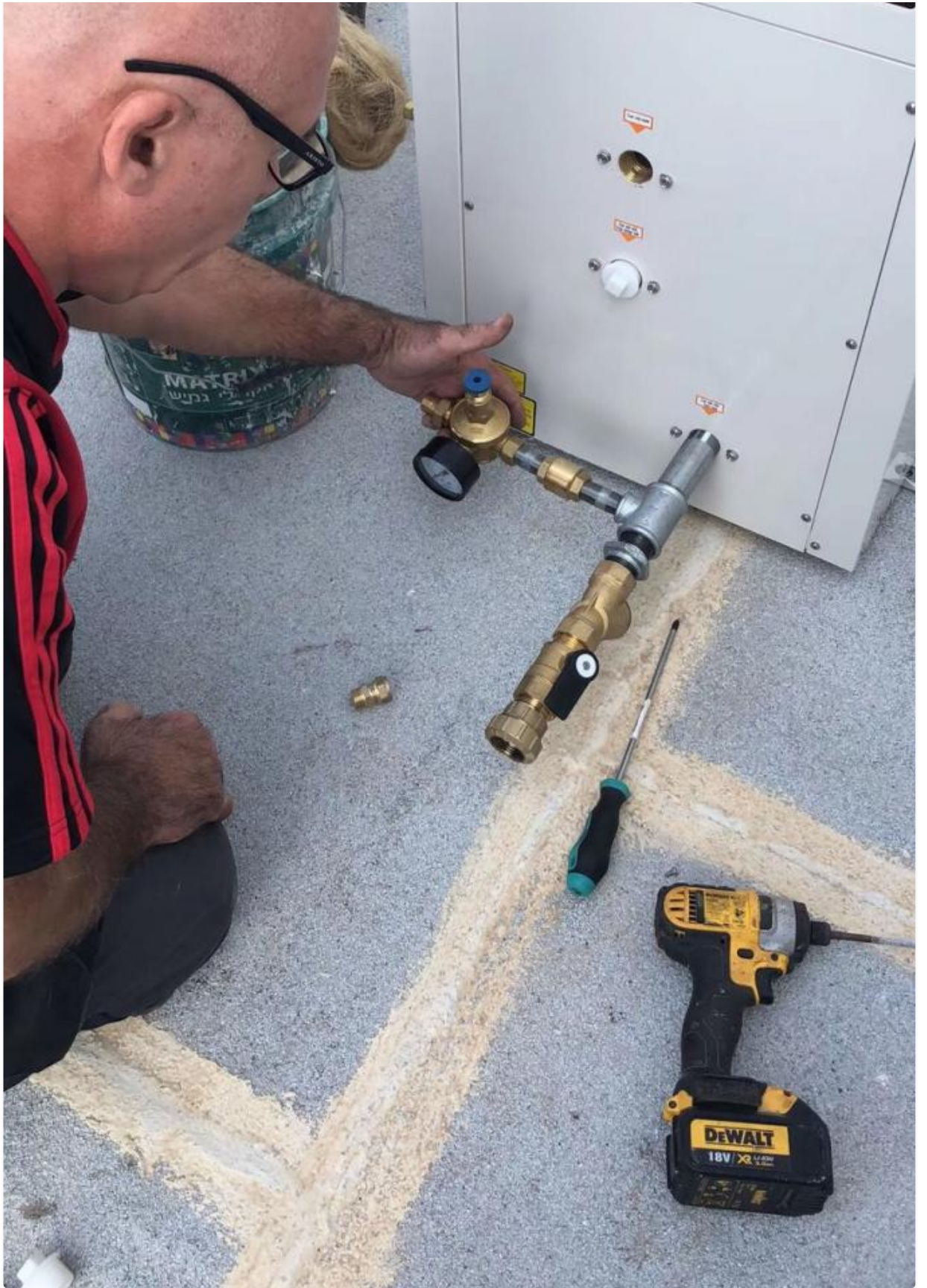
Product Gallery



















Meidebao[®] Foshan Meidebao Intelligent Electrical Appliances Co., Ltd

☎ 8613534489875

✉ meidebao-xiao@airsource-heatingpump.com

🌐 airsource-heatingpump.com

No9, Guangming North Road, Jiangyi, Leliu Town, Shunde District, Foshan City Guangdong Province, China