



DC Inverter Air Source Heat Pump Water Heater with High-Temperature Water Output and Energy-Efficient COP for Commercial Use

Our Product Introduction

for more products please visit us on airsource-heatingpump.com

Basic Information

- Place of Origin: China
- Brand Name: meidibao
- Certification: CE
- Model Number: M-D27AAH
- Minimum Order Quantity: 6 units
- Price: negotiate a price
- Packaging Details: Factory standards
- Delivery Time: 25-30 work days
- Payment Terms: T/T
- Supply Ability: 20 units day



Product Specification

- Name: DC Heat Pump
- Brand Name: MEIDIBAO
- Place Of Origin: China
- Type: Fixed
- Color: White,OEM
- Power Supply: 3N 380V 50HZ
- Highlight: **27KW EVI Technology Heat Pump ,
R410A EVI Technology Heat Pump ,
50Hz EVI Technology Heat Pump**

DC Inverter Air Source Heat Pump Water Heater for Commercial Outdoor House

The DC Inverter Air Source Heat Pump Water Heater is a high-efficiency, energy-saving solution designed for commercial buildings and outdoor installations. Using advanced inverter technology, this system provides stable and precise temperature control while significantly reducing energy consumption. It is ideal for hotels, apartments, office buildings, and large residential homes requiring a consistent and reliable hot water supply.

Key Features

- DC Inverter Technology - Automatically adjusts compressor speed
- Air Source Heat Pump System
- High-Temperature Water Output
- Energy-Efficient & High COP

Technical Specifications

Model	M-D27AAH
Heating Capacity Range	27 kW / 92,124 BTU/h
Heating Power Input Range	7.1 kW
Cooling Capacity Range	16.2 kW / 55,274 BTU/h
Cooling Power Input Range	6.5 kW
Frequency	50 Hz
ErP level (35)	A++
ErP level (55)	A+
Power Supply	3N 380V 50HZ
Max. Running Current	16.3 A
Refrigerant Type	R410A
Refrigerant Quantity	3.4 kg
Water Connection	1"
Water Pressure Drop	10 kPa
Water Pump Head	11.8 m
Fan Motor Quantity	2
Motor Power Input	220 W
Fan Speed	850 rpm
Noise	56 dB(A)
Net Weight	188 kg
Gross Weight	243 kg
Net Dimension (L/W/H)	1370 × 580 × 1525 mm

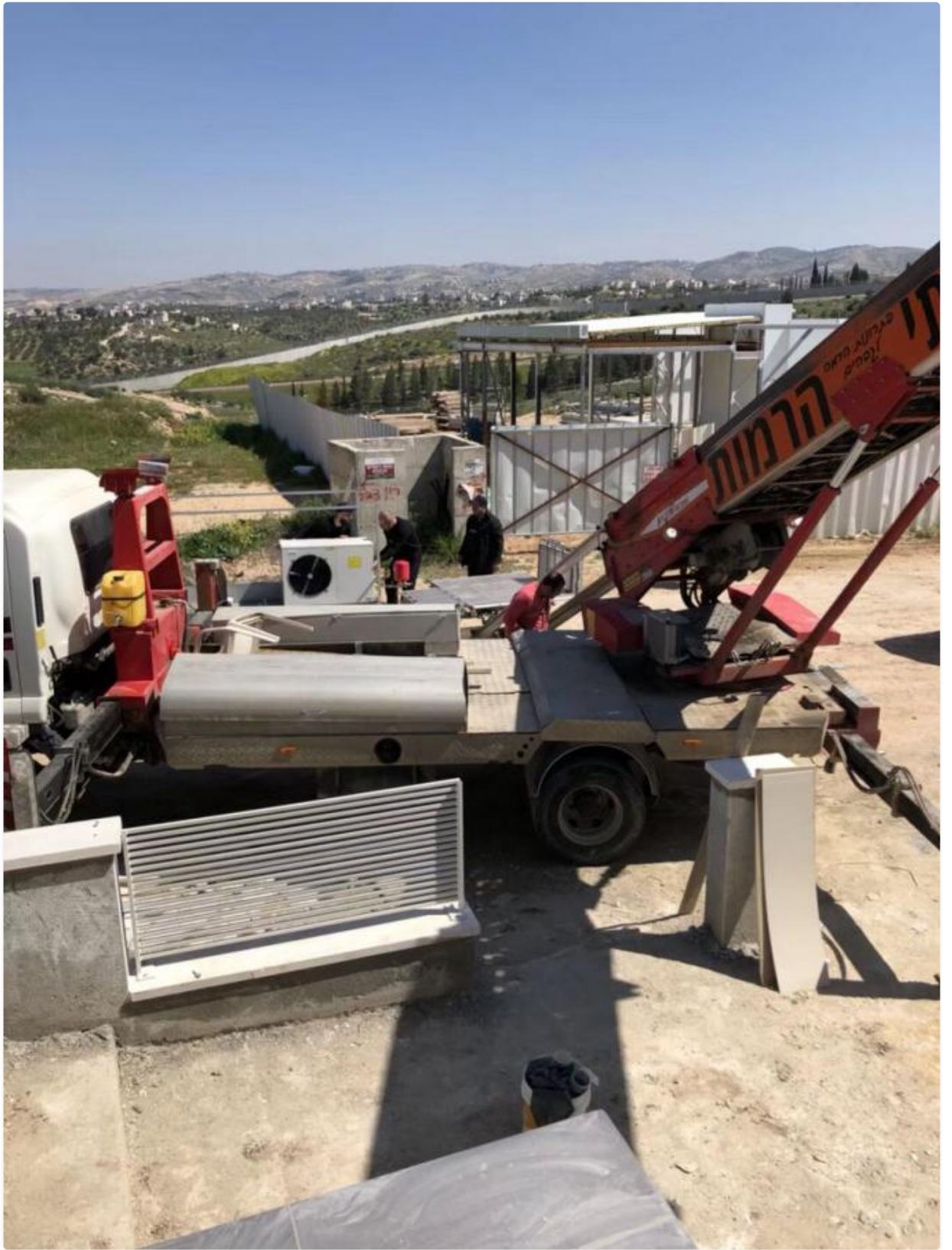
Shipping Dimension (L/W/H)	1480 × 690 × 1690 mm
Operation Ambient Temp.	-25 ~ 43

Why Choose This Heat Pump?

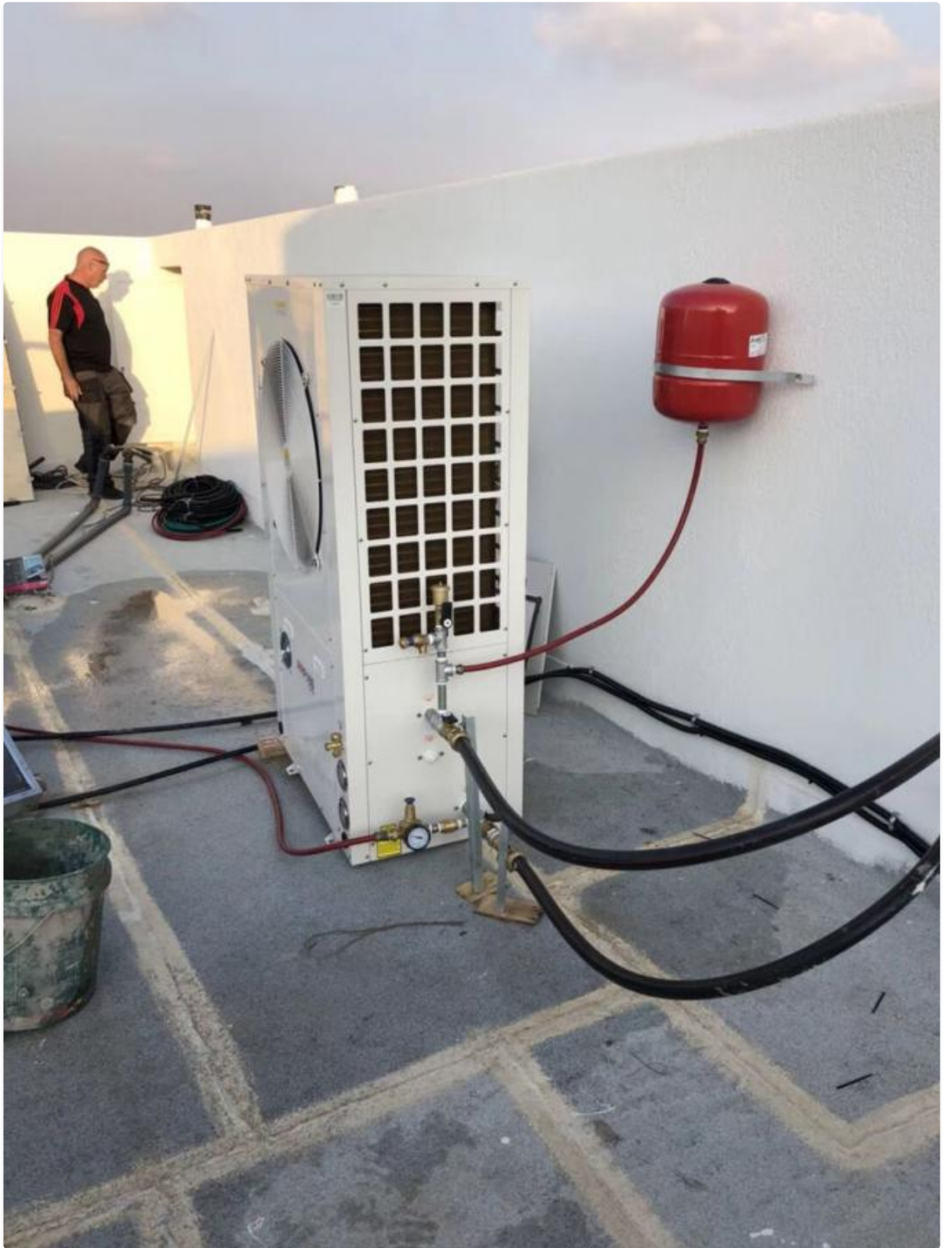
- Advanced inverter technology for energy savings
- High heating efficiency with stable performance
- Designed for both commercial and outdoor residential use
- Durable, eco-friendly, and cost-effective hot water solution

Product Gallery

















Meidibao® Foshan Meidebao Intelligent Electrical Appliances Co., Ltd

☎ 8613534489875

✉ info@meidibao.com

🌐 airsource-heatingpump.com

No9, Guangming North Road, Jiangyi, Leliu Town, Shunde District, Foshan City Guangdong Province, China