



Fixed Type Geothermal Heat Pump with High COP Smart Inverter Technology and Eco-Friendly R410A Refrigerant

Our Product Introduction

Basic Information

- Place of Origin: China
- Brand Name: meidibao
- Certification: CE
- Model Number: M-D36AAH
- Minimum Order Quantity: 6 units
- Price: negotiate a price
- Packaging Details: Factory standards
- Delivery Time: 25-30 work days
- Payment Terms: T/T
- Supply Ability: 20 units day



Product Specification

- Use: MultiFunction
- Power Supply: 3N 380V 50HZ
- Name: EVI Heat Pump
- Place Of Origin: China
- Type: Fixed
- Refrigerant Type: R410A
- Operation Ambient Temp: -25~43
- Highlight: **Geothermal Heat Pump Water Heaters, Air to Water Heat Pump, EVI Heat Pump Water Heaters**

for more products please visit us on airsource-heatingpump.com

Fixed Type Geothermal Heat Pump Water Heaters Air To Water Heat Pump

Hot Water Supply

Product Overview

The Meidibao Geothermal & Air-to-Water Heat Pump Water Heater is a high-efficiency, cost-effective heating solution designed for residential and commercial applications. With advanced geothermal and air-source heat pump technology, this system provides stable heating, cooling, and hot water supply while significantly reducing energy costs.

Key Features

- Dual Technology: Geothermal & Air-to-Water
- Best Price & High Cost-Effectiveness
- High COP (Coefficient of Performance)
- Reliable Hot Water Supply
- Smart Inverter Technology - Automatically adjusts power output
- Eco-Friendly Refrigerant (R410A/R32 Available)

Technical Specifications

Model	M-D36AAH
Heating Capacity Range	36 kW / 122,832 BTU/h
Heating Power Input Range	9.47 kW
Cooling Capacity Range	21.6 kW / 73,699 BTU/h
Cooling Power Input Range	8.7 kW
Frequency	50 Hz
ErP Level (35)	A++
ErP Level (55)	A+
Power Supply	3N 380V 50HZ
Max. Running Current	21.8 A
Refrigerant Type	R410A
Refrigerant Quantity	3.1 kg
Water Connection	1"
Water Pressure Drop	10 kPa
Water Pump Head	11.8 m
Fan Motor Quantity	2
Motor Power Input	220 W
Fan Speed	850 rpm

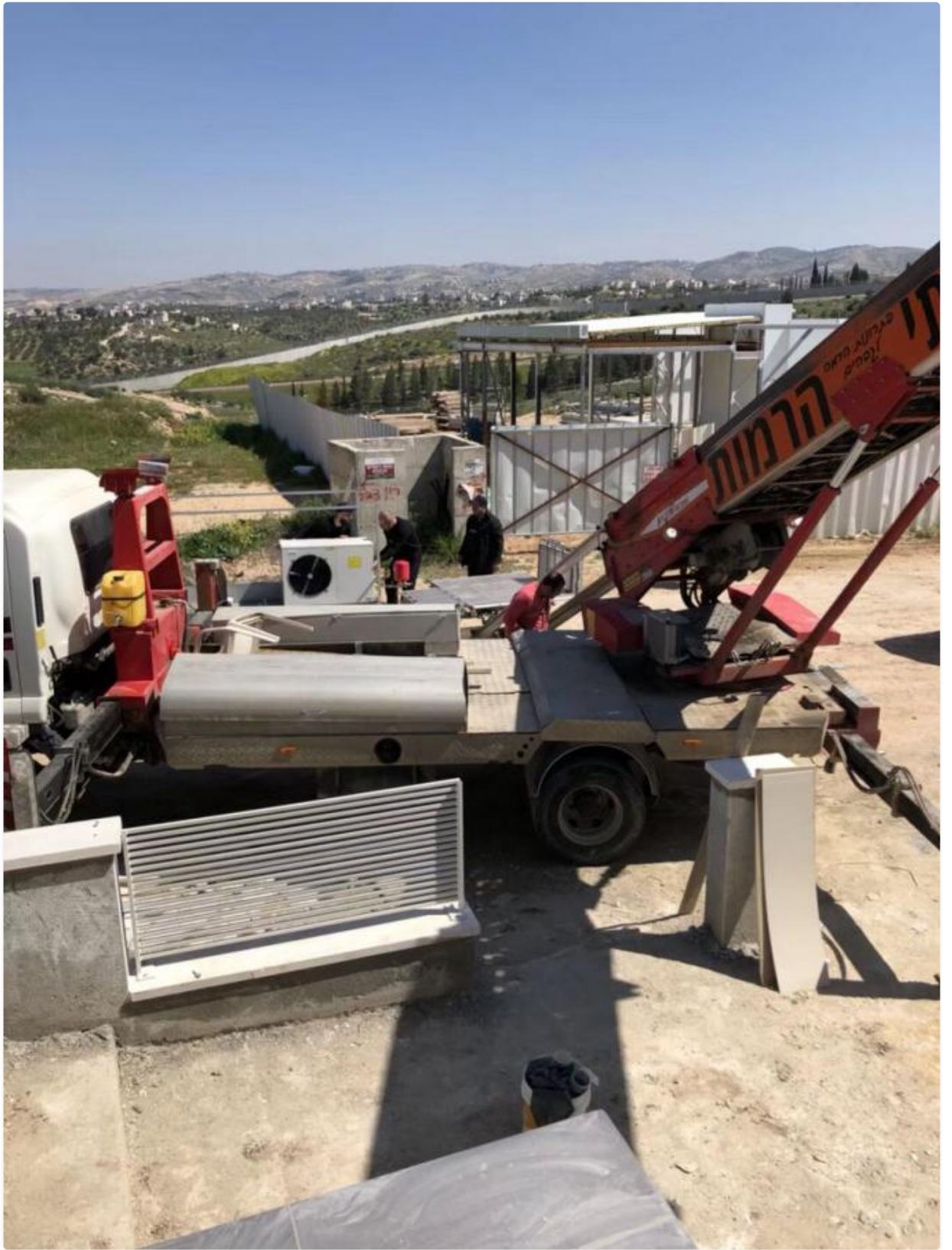
Noise	58 dB(A)
Net Weight	202 kg
Gross Weight	254 kg
Net Dimension (L/W/H)	1370 × 580 × 1525 mm
Shipping Dimension (L/W/H)	1480 × 690 × 1690 mm
Operation Ambient Temp.	-25 to 43

System Advantages

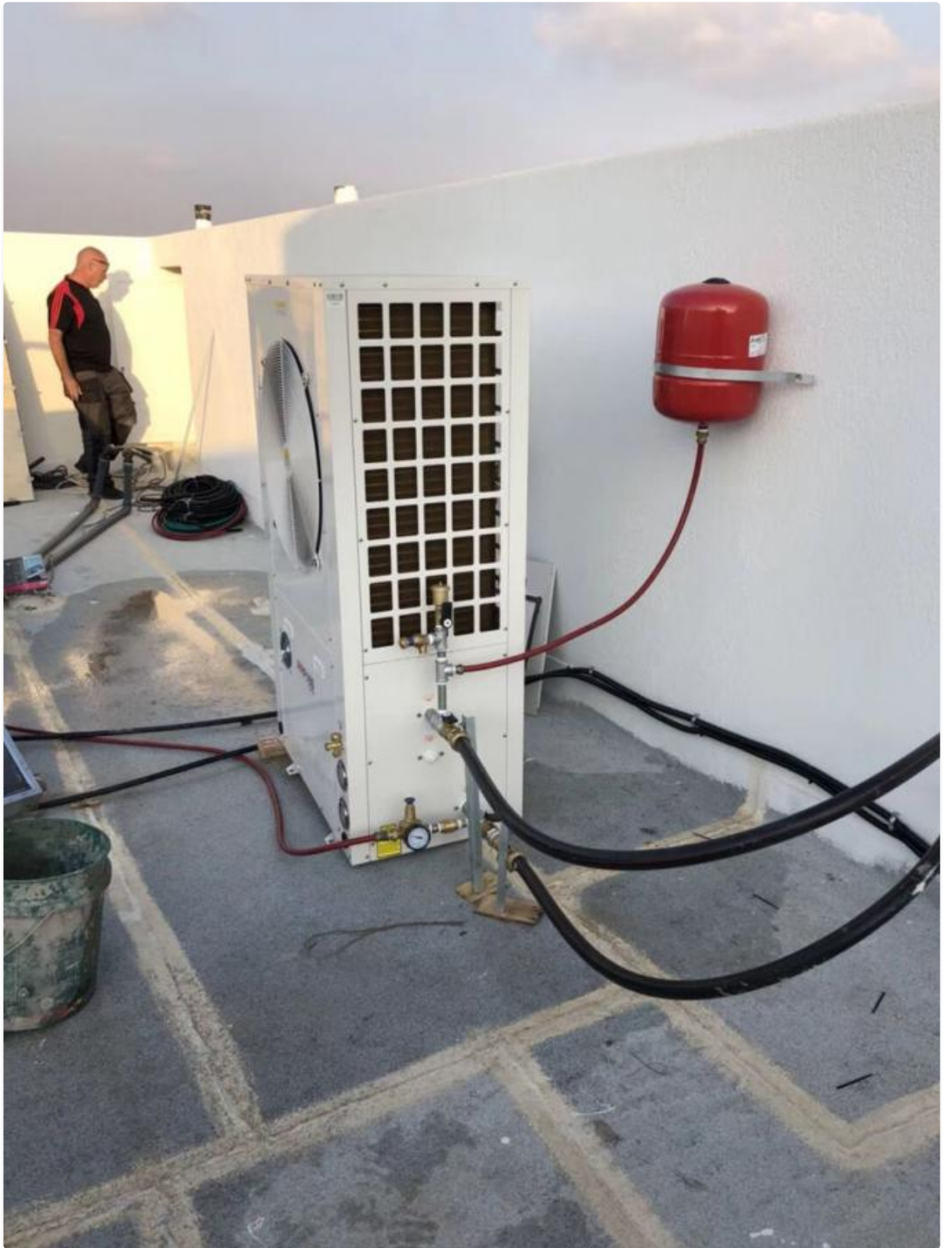
- Multi-Functional System
- Eco-Friendly & Sustainable
- Smart & Stable Performance
- Quiet & Comfortable Operation
- Durable & Long-Lasting Build

Product Images

















Meidebao[®] Foshan Meidebao Intelligent Electrical Appliances Co., Ltd

☎ 8613534489875 ✉ meidebao-xiao@airsource-heatingpump.com 🌐 airsource-heatingpump.com

No9, Guangming North Road, Jiangyi, Leliu Town, Shunde District, Foshan City Guangdong Province, China