



## Meidibao WiFi Control DC Inverter Air Source Heat Pump with 3-in-1 Function for Heating Cooling and DHW

Our Product Introduction

### Basic Information

- Place of Origin: China
- Brand Name: Meidibao
- Certification: CE
- Model Number: M-D25ADH
- Minimum Order Quantity: 6units
- Price: negotiate a price
- Packaging Details: Factory standard
- Delivery Time: 25-30 days
- Payment Terms: T/T
- Supply Ability: 20units a day



### Product Specification

- Brand Name: Meidibao
- Fan Direction: Side
- Color: Grey
- Power: 380V/3N/50Hz
- Operation Condition: -30°C-40°C
- Compressor: Copeland Scroll
- Highlight: **Meidibao Heat pump, Monoblock Heat pump, DHW Heat pump**

for more products please visit us on [airsource-heatingpump.com](http://airsource-heatingpump.com)

## Product Description

# Meidibao WiFi Heating Cooling DHW Heat Pump Air Source DC Inverter Air To Water Monoblock Heat Pump

The **Meidibao WiFi-enabled DC Inverter Monoblock Heat Pump** is an energy-efficient and eco-friendly solution that integrates **heating**, **cooling**, and **domestic hot water (DHW)** into a single unit. Using **advanced air-to-water technology**, it absorbs energy from the air and delivers reliable indoor climate control year-round.

## Key Features

- 3-in-1 Function
- DC Inverter Compressor
- Smart WiFi Control
- Eco-friendly R32 Refrigerant
- Quiet Operation

## Applications

- Residential homes, apartments, and villas
- Small commercial buildings and offices
- Hotels, schools, and healthcare facilities
- Projects requiring sustainable, low-carbon heating/cooling solutions

## Why Choose Meidibao EVI Heat Pump?

- Energy Saving
- Multi-Functionality
- Stable and Silent Operation
- Environmentally Friendly
- Smart Control Options
- Wide Ambient Temperature Range
- Durable and Low Maintenance
- Easy Installation - Monoblock design

## Specifications

Model		M-D25ADH
Heating Capacity Range	kW	10.8-36
Heating Capacity Range	BTU/h	36849-122832
Heating Power Input Range	kW	2.5-9.5
Cooling Capacity Range	kW	6.5-21.6
Cooling Capacity Range	BTU/h	22178-73699
Cooling Power Input Range	kW	2.1-8.8
Frequency	Hz	30-90
ErP level(35 )	/	A++
ErP level(55 )	/	A+

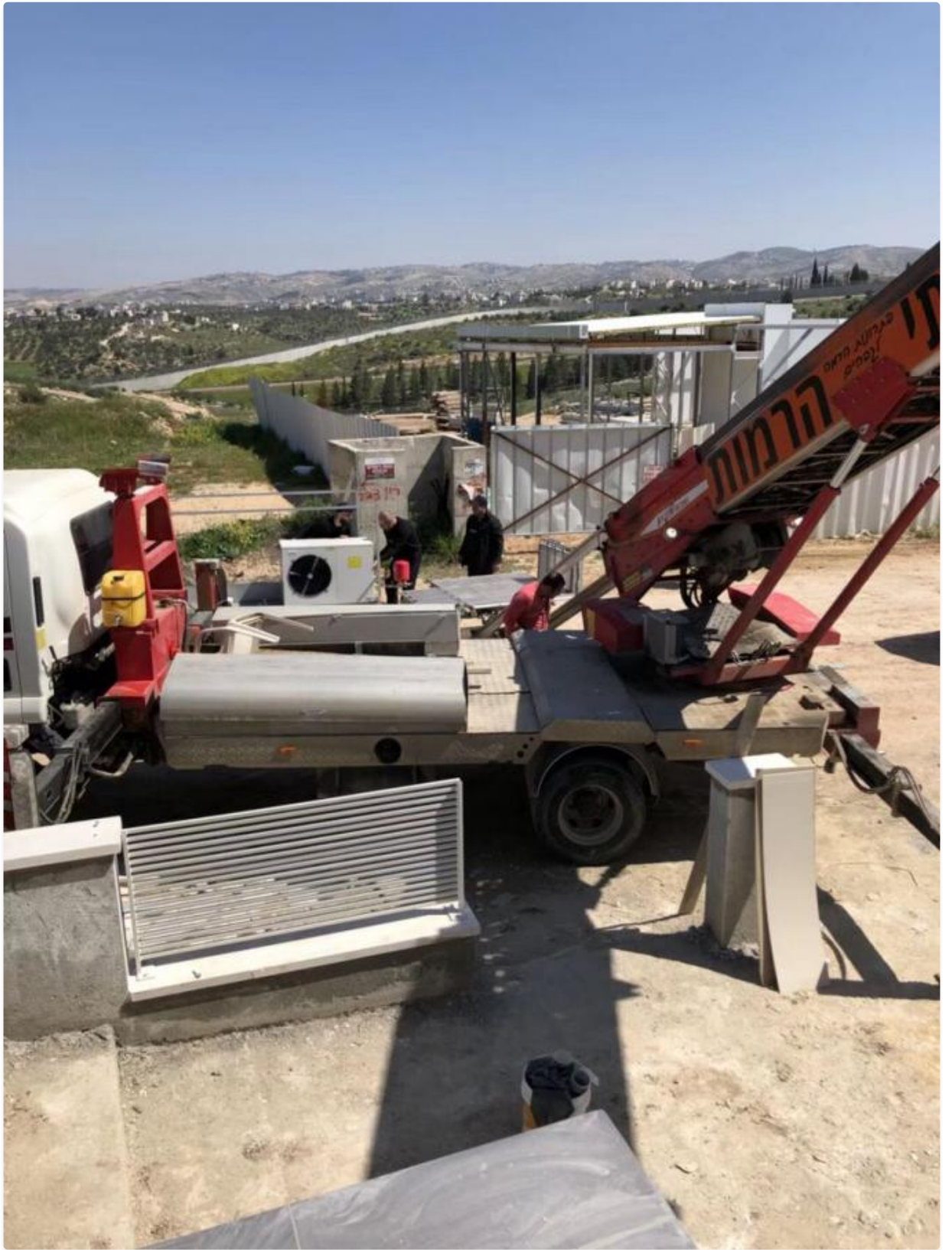
Power Supply	/	3N 380V 50HZ
Electric Heater	kW	/
Max. Running Current	A	21.8
Refrigerant Type	/	R410A
Refrigerant Quantity	kg	3.3
Compressor Brand	/	Mitsubishi Electric
Water Pump Brand	/	WiLo
Water Connection	/	1"
Water Flow	m <sup>3</sup> /h	6.2
Water Pressure Drop	kPa	10
Water Pump Head	m	11.8
Fan Motor Quantity	/	2
Motor Power Input(max)	W	136
Motor Power Input(min)	W	18
Fan Speed (max)	rpm	850
Fan Speed (min)	rpm	300
Pressure Sensor 1	Bar	0-20
Pressure Sensor 2	Bar	0-45
Noise	dB(A)	58
Net Weight	kg	183
Gross Weight	kg	235
Net Dimension(L/W/H)	mm	1370×580×1525
Shipping Dimension(L/W/H)	mm	1480×690×1690

### Energy Efficiency Advantage

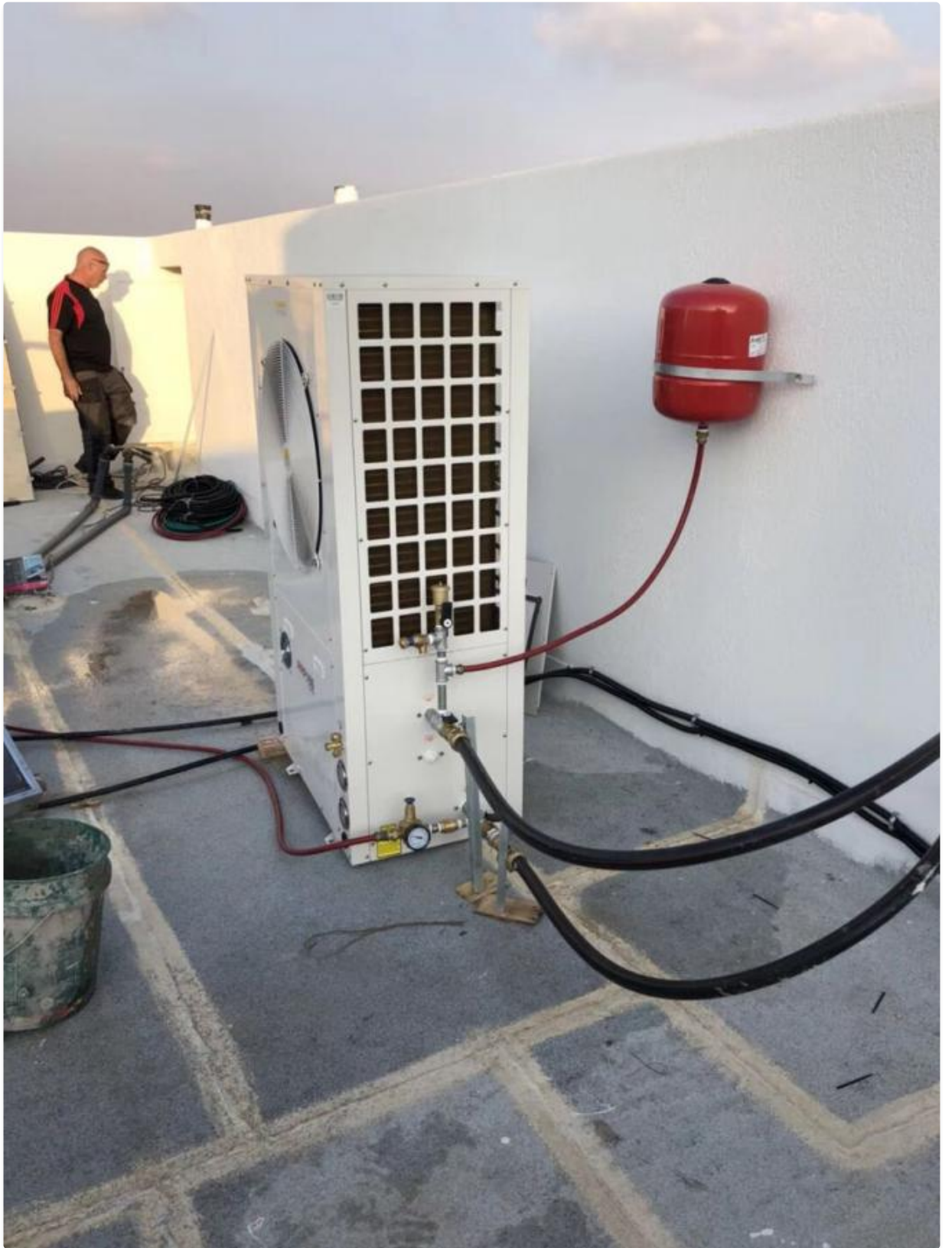
Under ideal weather conditions, heat pump water heaters produce three times the energy used to power the heat pump. In other words, heat pump water heaters use one-third of the electricity of conventional electric water heaters. CUB estimates that the average residential customer would save a lot of money per month using a MEIDIBAO heat pump water heater.

### Product Images

















**Meidibao® Foshan Meidebao Intelligent Electrical Appliances Co., Ltd**

☎ 8613534489875

✉ info@meidibao.com

🌐 airsource-heatingpump.com

No9, Guangming North Road, Jiangyi, Leliu Town, Shunde District, Foshan City Guangdong Province, China