



High Efficiency Air Source Heat Pump Swimming Pool Heater with 380V/3N/50Hz Power and Copeland Compressor

Our Product Introduction

Basic Information

- Place of Origin: China
- Brand Name: Meidibao
- Certification: CE
- Model Number: M-D25ADH
- Minimum Order Quantity: 6units
- Price: negotiate a price
- Packaging Details: Factory standard
- Delivery Time: 25-30 days
- Payment Terms: T/T
- Supply Ability: 20units a day



Product Specification

- Brand Name: Meidibao
- Color: Galvanized
- Power: 380V/3N/50Hz
- Operation Condition: -30°C-40°C
- Compressor: Copeland
- Fan Direction: Side
- Highlight: **Heat Pump Pool Heater,
Swimming Pool Air Source Heat Pump**

for more products please visit us on airsource-heatingpump.com

Product Description

Air Source Heat Pump Swimming Pool Machine High Efficiency Heat Pump Pool Heater

The **Meidibao Air Source Heat Pump Swimming Pool Machine** is engineered for **efficient and reliable pool heating**, using cutting-edge inverter technology and high-performance components. Ideal for both **residential and commercial pools**, this unit provides **stable water temperatures** with low energy consumption and environmentally friendly operation.

Applications

Residential Heating: Warm up homes effectively without skyrocketing energy bills.

Commercial Spaces: Ideal for offices, hotels, and retail stores requiring consistent, efficient heating.

Industrial Use: Suited for large-scale heating needs in warehouses or factories.

Swimming Pools: Maintain pool water at a comfortable temperature year-round.

Features

- High Energy Efficiency
- Durable Design
- Low Noise Operation
- Smart Controller
- Eco-Friendly Refrigerant

Specifications

Model	M-D25ADH
Heating Capacity Range	10.8-36 kW (36849-122832 BTU/h)
Heating Power Input Range	2.5-9.5 kW
Cooling Capacity Range	6.5-21.6 kW (22178-73699 BTU/h)
Cooling Power Input Range	2.1-8.8 kW
Frequency	30-90 Hz
ErP level(35)	A++
ErP level(55)	A+
Power Supply	3N 380V 50HZ
Max. Running Current	21.8 A
Refrigerant Type	R410A
Refrigerant Quantity	3.3 kg
Compressor Brand	Mitsubishi Electric
Water Pump Brand	WiLo
Water Connection	1"
Water Flow	6.2 m ³ /h
Water Pressure Drop	10 kPa
Water Pump Head	11.8 m

Fan Motor Quantity	2
Motor Power Input(max)	136 W
Motor Power Input(min)	18 W
Fan Speed (max)	850 rpm
Fan Speed (min)	300 rpm
Pressure Sensor 1	0-20 Bar
Pressure Sensor 2	0-45 Bar
Noise	58 dB(A)
Net Weight	183 kg
Gross Weight	235 kg
Net Dimension(L/W/H)	1370×580×1525 mm
Shipping Dimension(L/W/H)	1480×690×1690 mm

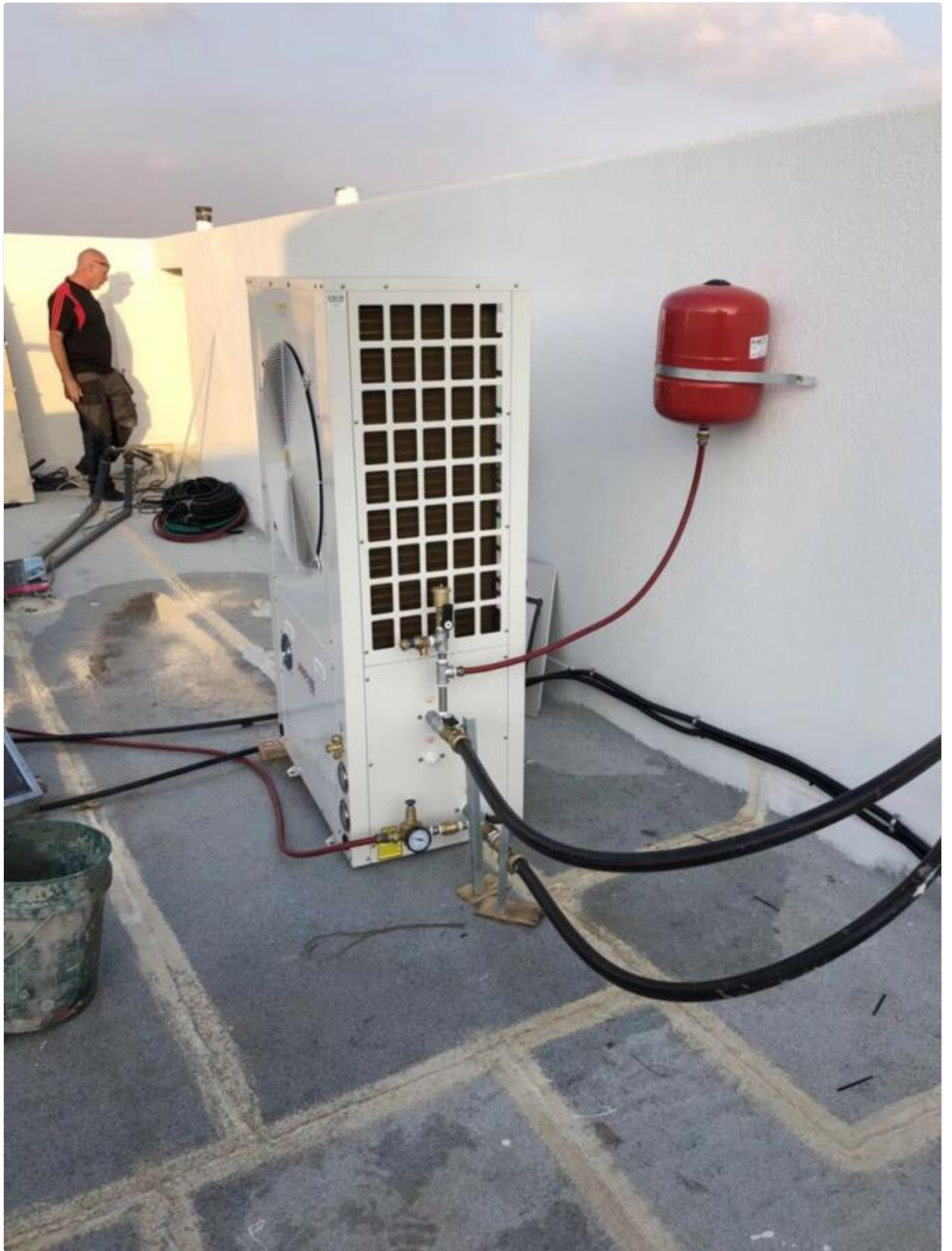
Under ideal weather conditions, heat pump water heaters produce three times the energy used to power the heat pump. In other words, heat pump water heaters use one-third of the electricity of conventional electric water heaters. CUB estimates that the average residential customer would save a lot of money per month using a MEIDIBAO heat pump water heater.

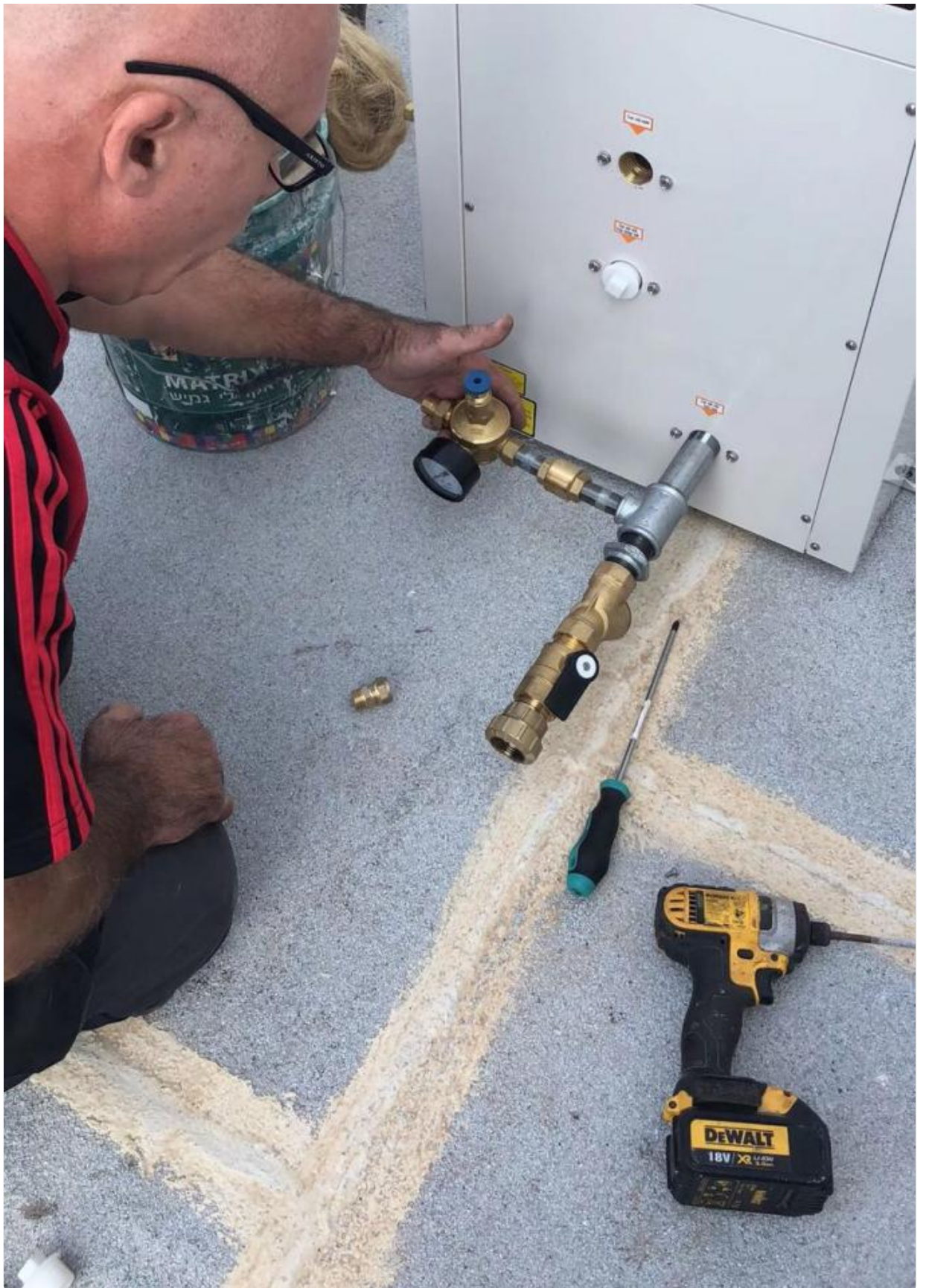
Product Gallery

















Meidibao® Foshan Meidebao Intelligent Electrical Appliances Co., Ltd

☎ 8613534489875

✉ info@meidibao.com

🌐 airsource-heatingpump.com

No9, Guangming North Road, Jiangyi, Leliu Town, Shunde District, Foshan City Guangdong Province, China